



Office Address: The Prestige, DHA Multan

Website: [www.theprestigedha.com](http://www.theprestigedha.com) Email: [support@theprestigedha.com](mailto:support@theprestigedha.com) UAN: +92 308 1991122 SALES: +92 300 6338232





## ABOUT BUILDER

Mr. Wajid is the visionary Chairman of Wajid & Construction, a company renowned for excellence, integrity, and forward-thinking development. With decades of leadership and an unwavering commitment to quality, he has guided Wajid & Construction. to become a trusted name in delivering landmark projects that set new benchmarks in the industry. His vision continues to shape developments that combine innovation, sustainability, and long-term value.

*Mr. Wajid Sharif*

CHAIRPERSON  
WAJID & CONSTRUCTION PVT. LTD.



# WHERE THE CITY'S BEAUTY LIVES

*Your Permanent Address*

Discover a location defined by The Prestige and seamless connectivity. Perfectly positioned just 10 minute from the DHA Main Gate, 0 minute From Bosan Road and 20 minute to Airport this address places you at the very heart of a thriving yet serene community — where accessibility meets distinction. Located in the most peaceful enclave of The Prestige , it offers a refined living experience with every essential amenity just moments away. A setting that enhances daily life, elevates value, and creates a true sense of belonging.

**0**<sup>min</sup>

DHA MAIN GATE

**0**<sup>min</sup>

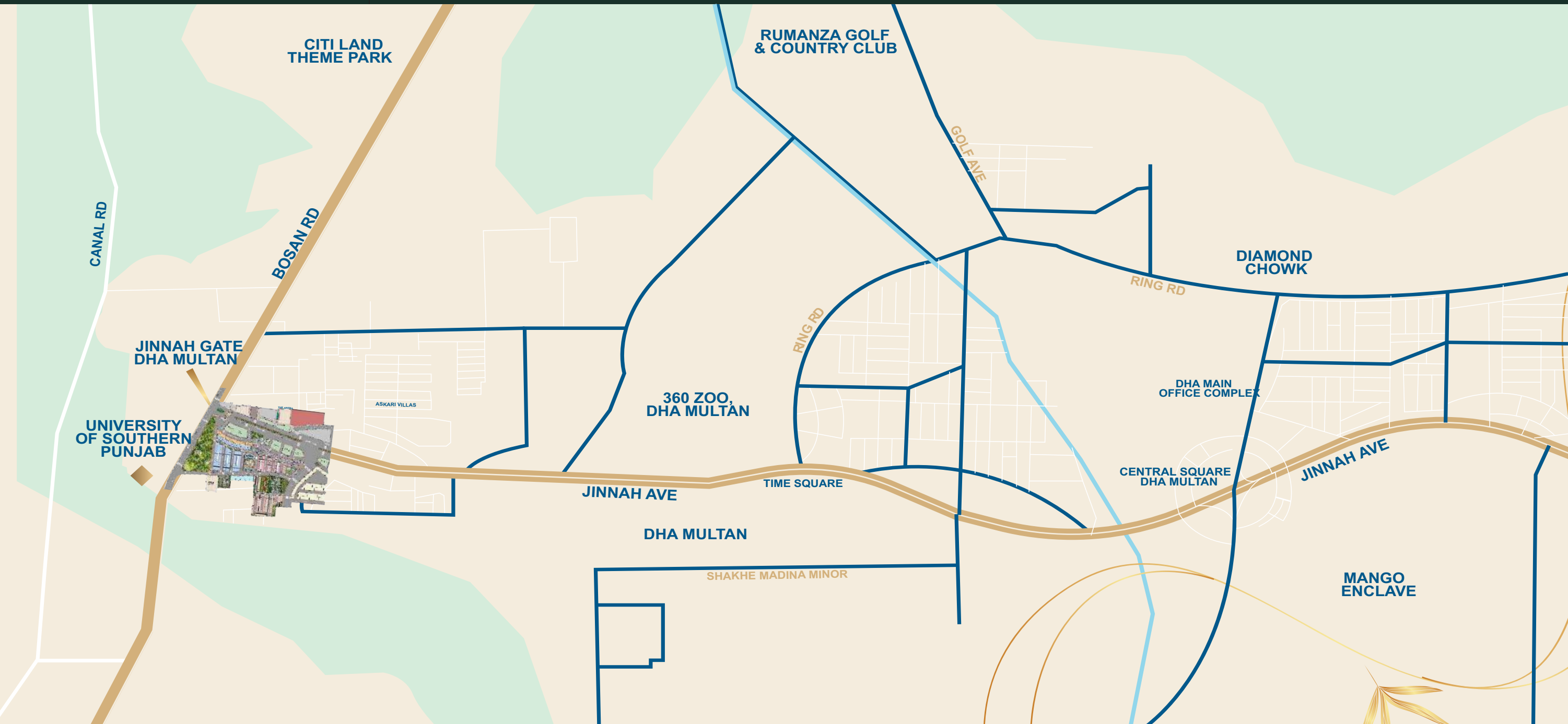
BOSAN ROAD

**10**<sup>min</sup>

RUMANZA GOLF CLUB

**20**<sup>min</sup>

AIRPORT



# MULTAN

WHERE SUFISM MEETS THE SOIL  
BUILT LIKE HISTORY OWNED LIKE A FUTURE



## About PROJECT

The Prestige by Wajid & Construction is the true expression of refined living, Where timeless elegance meets purposeful design located in the Heart of DHA multan. It stands at one of the city's most prestigious addresses every detail is crafted to deliver an elevated lifestyle defined By comfort, exclusivity, and sophistication. With services that go Beyond expectations, The Prestige redefines modern luxury this Landmark project is set to become a new benchmark for premium Living in the region not just a development, but a statement of Distinction and excellence.





A couple is sitting on a grey sofa in a modern living room. The woman is on the left, wearing a white long-sleeved top and light-colored pants, looking towards the man. The man is on the right, wearing a white long-sleeved shirt and light-colored pants, looking back at the woman. They are both smiling. The room has large windows in the background, showing a view of a city or building. There are indoor plants on the sofa and a coffee table in front of them. The coffee table has a candle and some snacks on it. The overall atmosphere is warm and intimate.

LUXURY LIVING,  
DESIGNED FOR  
*Family Life*



**A COMPLETE  
PRESTIGIOUS LIFESTYLE**



# 6 MARLA

MODERN LIVING MADE EASY

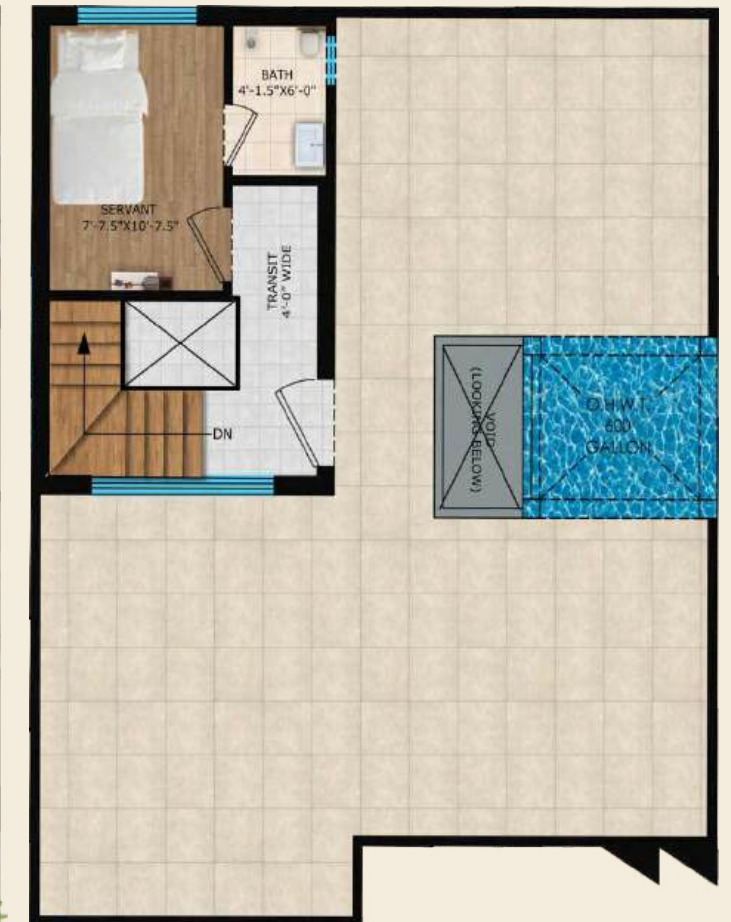




GROUND FLOOR  
1143 SFT



FIRST FLOOR  
1098 SFT



TOP FLOOR  
259 SFT





# 9 MARLA

## SPACE THAT FITS YOUR DREAMS

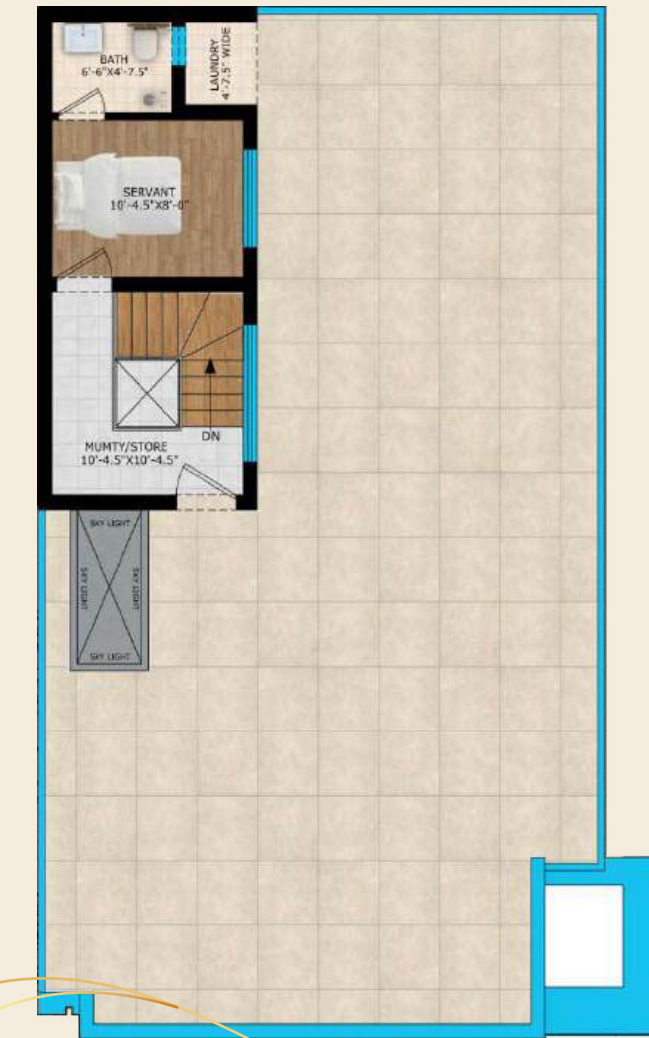




**GROUND FLOOR**  
1641 SFT



**FIRST FLOOR**  
1523 SFT



**TOP FLOOR**  
300 SFT



# 12 MARLA

## LUXURY WITH AMPLE SPACES

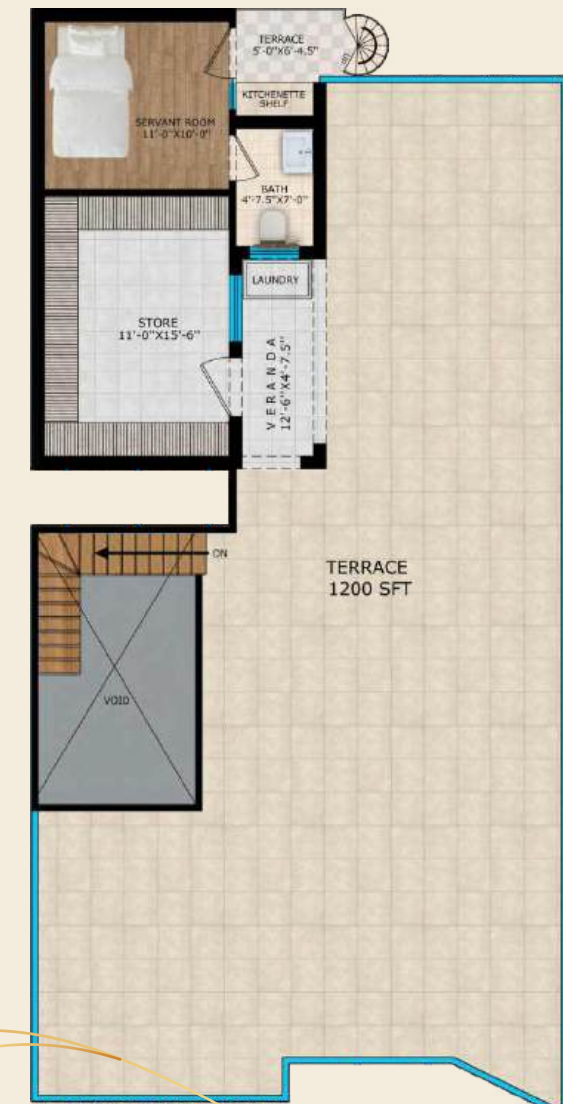




**GROUND FLOOR**  
2108 SFT



**FIRST FLOOR**  
1824 SFT



**TOP FLOOR**  
450 SFT





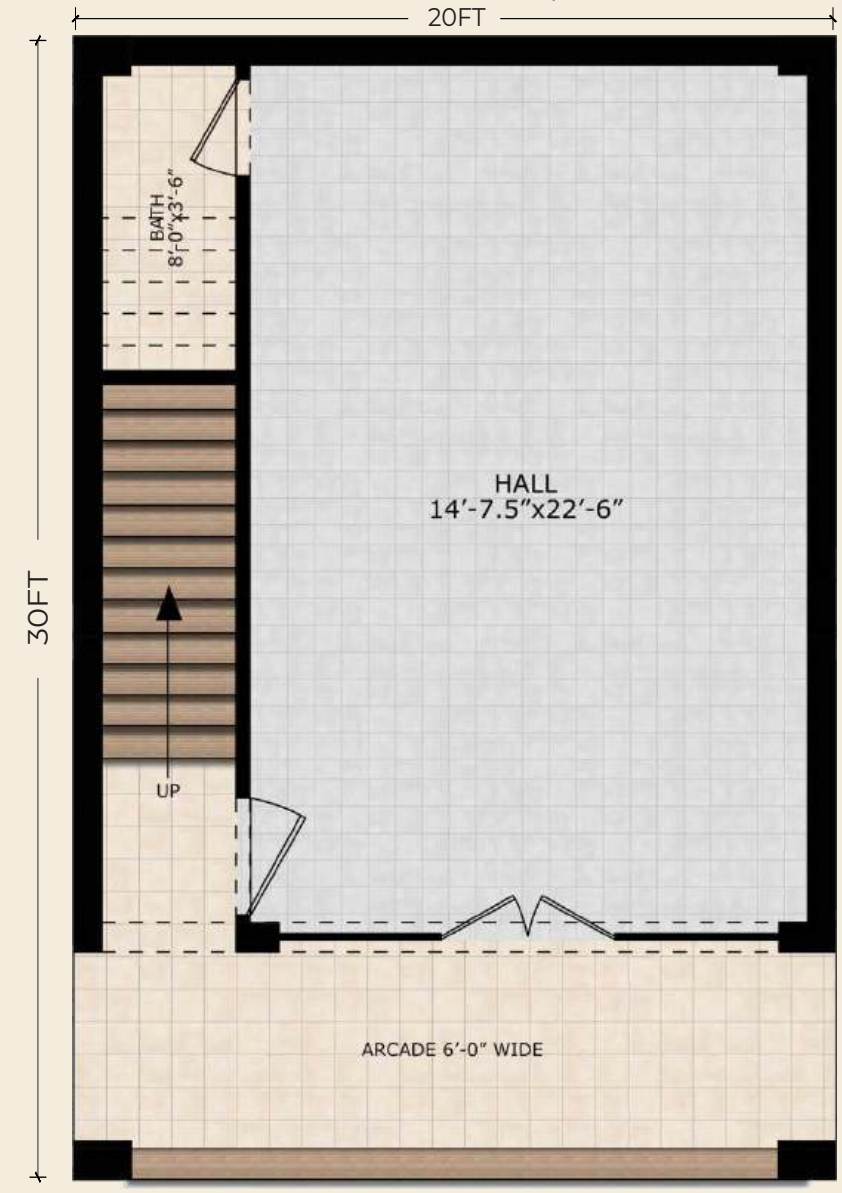
# 2.67

MARLA  
COMMERCIAL  
*Tower*

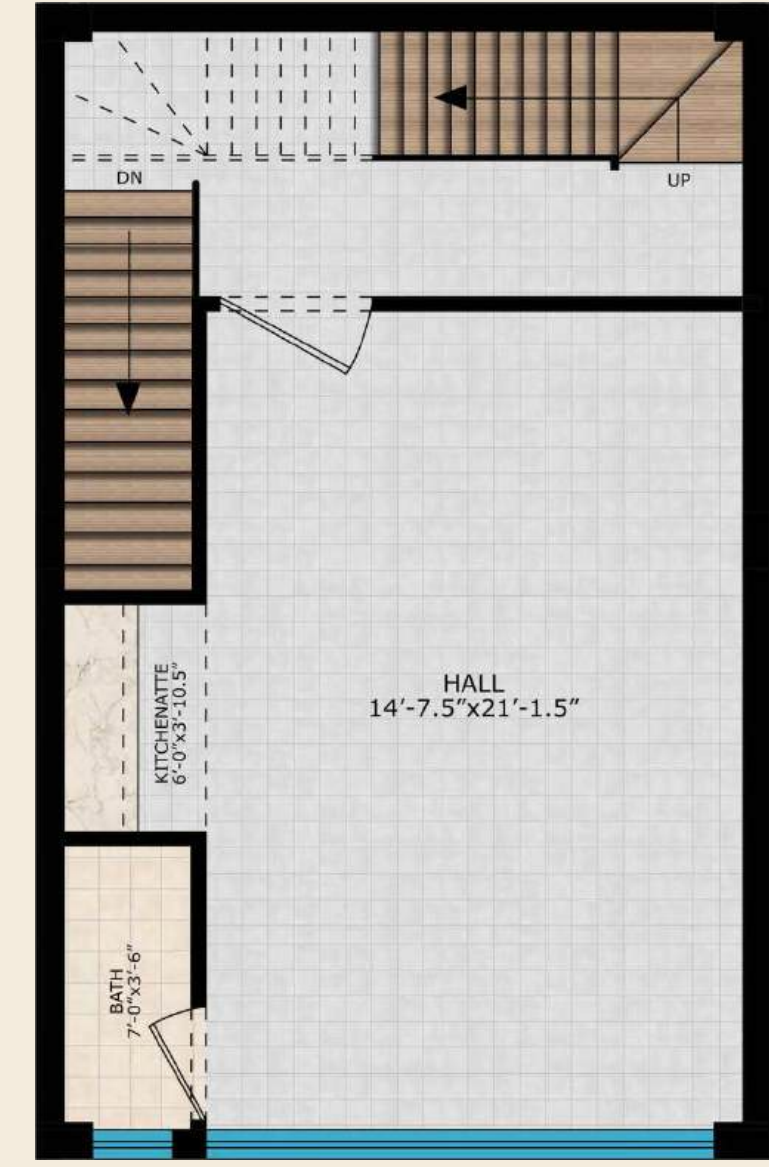
WHERE EVERY INCH  
WORKS FOR BUSINESS



# 2.67 MARLA COMMERCIAL Tower

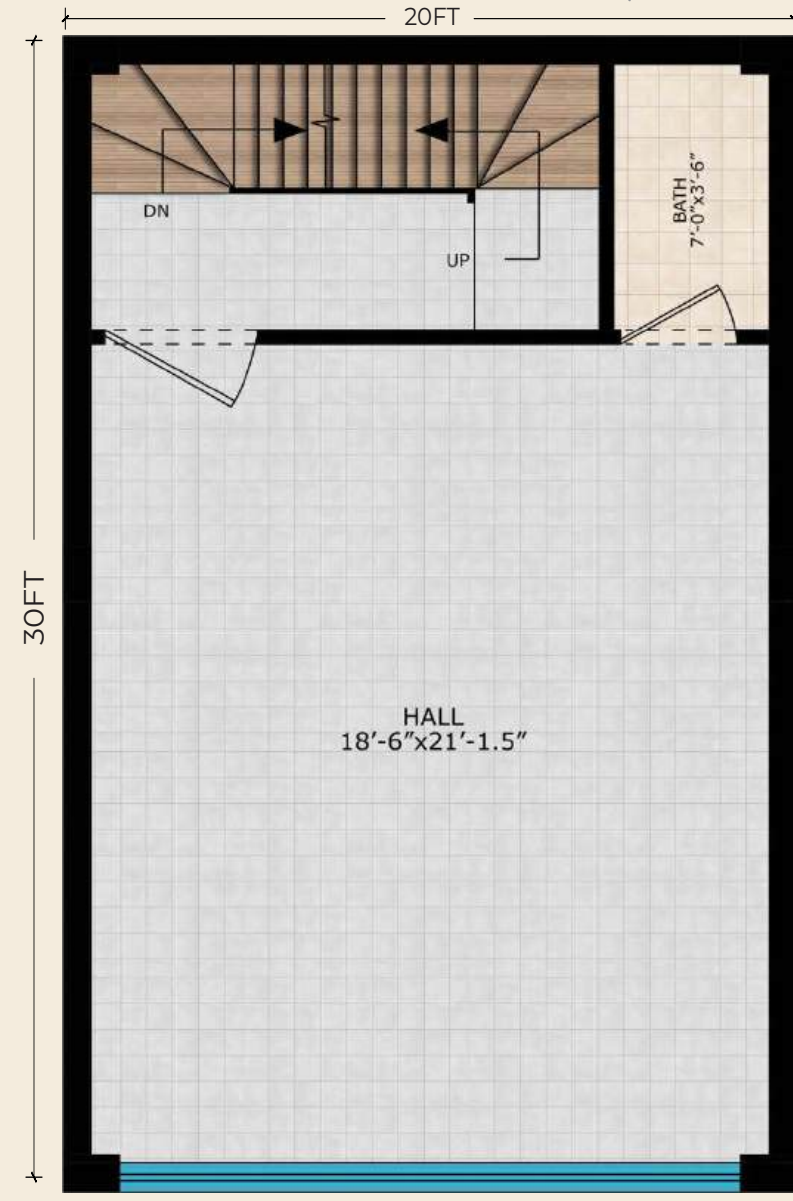


GROUND FLOOR

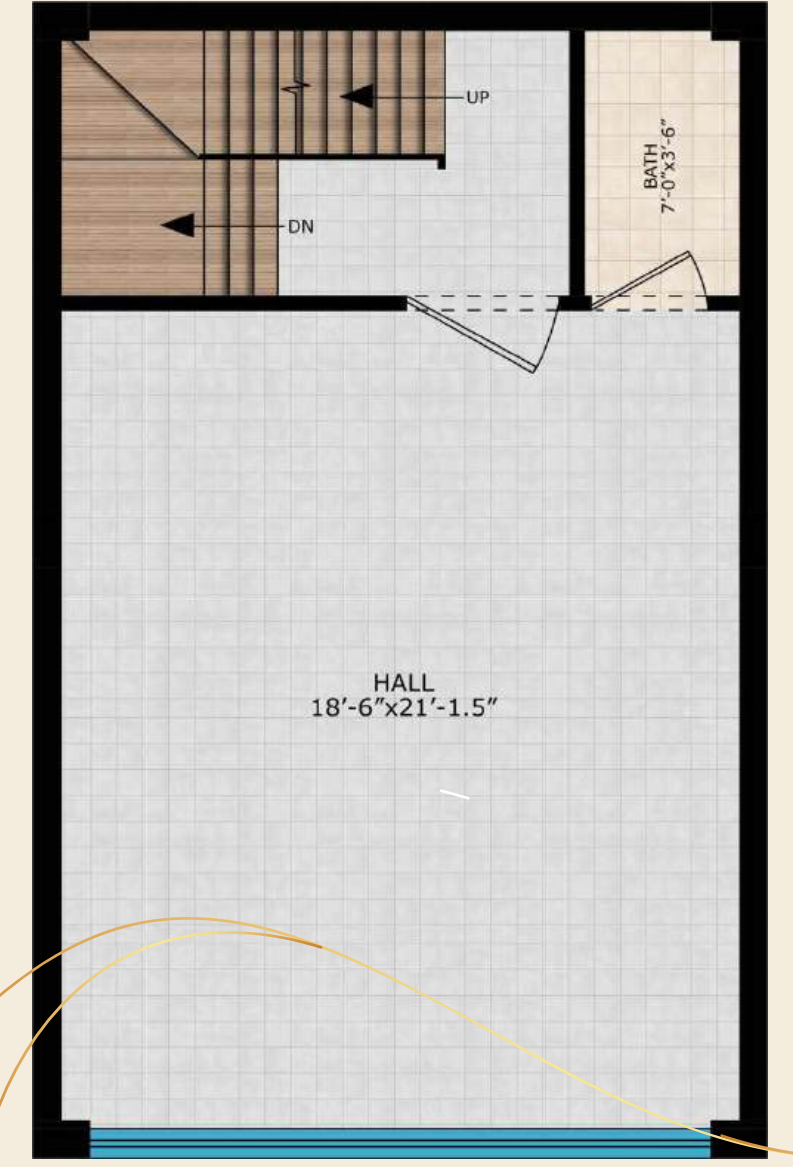


FIRST FLOOR

# 2.67 MARLA COMMERCIAL Tower



SECOND FLOOR



THIRD FLOOR



# 04 MARLA COMMERCIAL *Tower*

WHERE COMPACT SPACE MEETS  
BIG OPPORTUNITY.

04

MARLA COMMERCIAL  
*Tower*



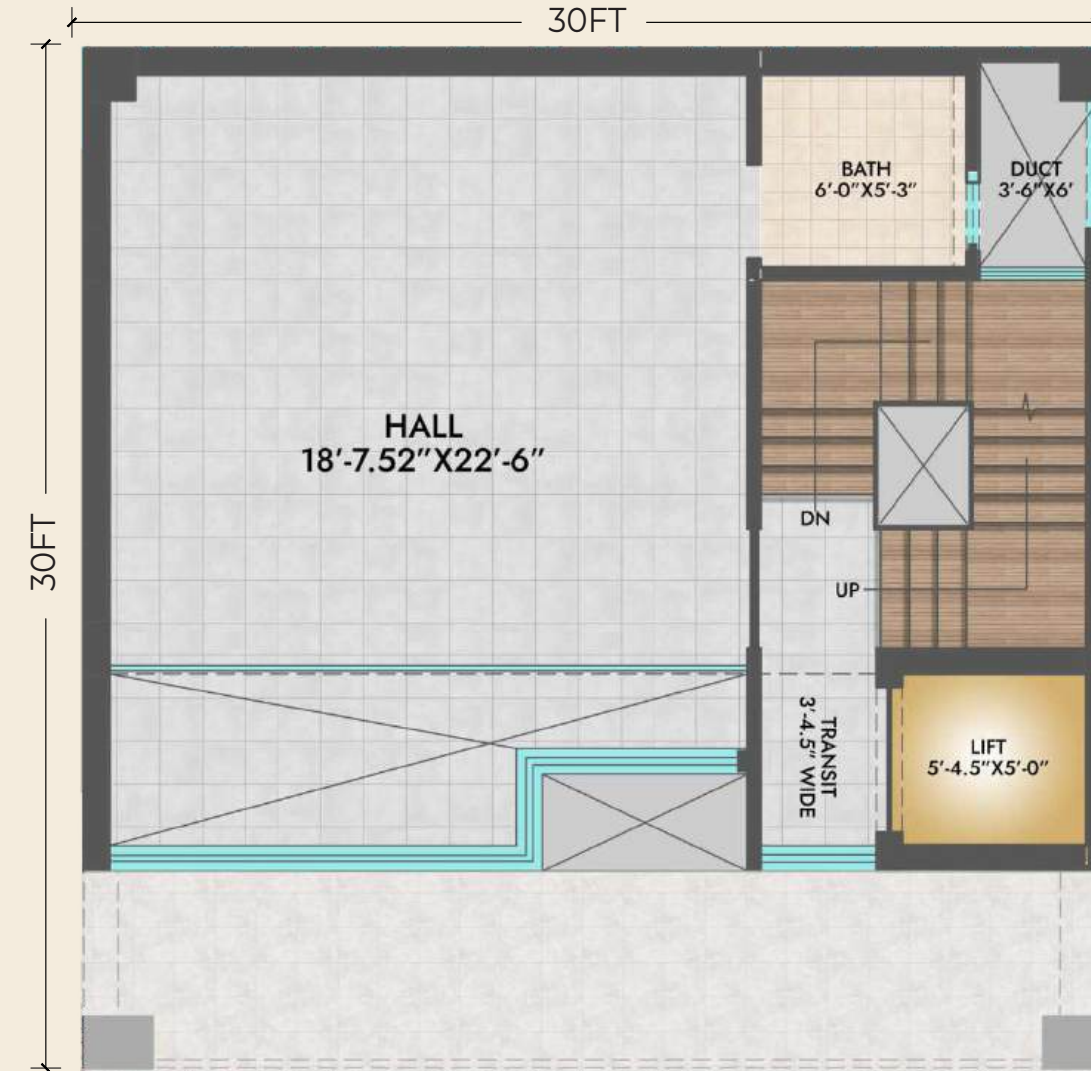
BASEMENT FLOOR



GROUND FLOOR

04

MARLA COMMERCIAL  
*Tower*



MEZZANINE FLOOR



FIRST FLOOR

# 04 MARLA COMMERCIAL Tower



SECOND FLOOR

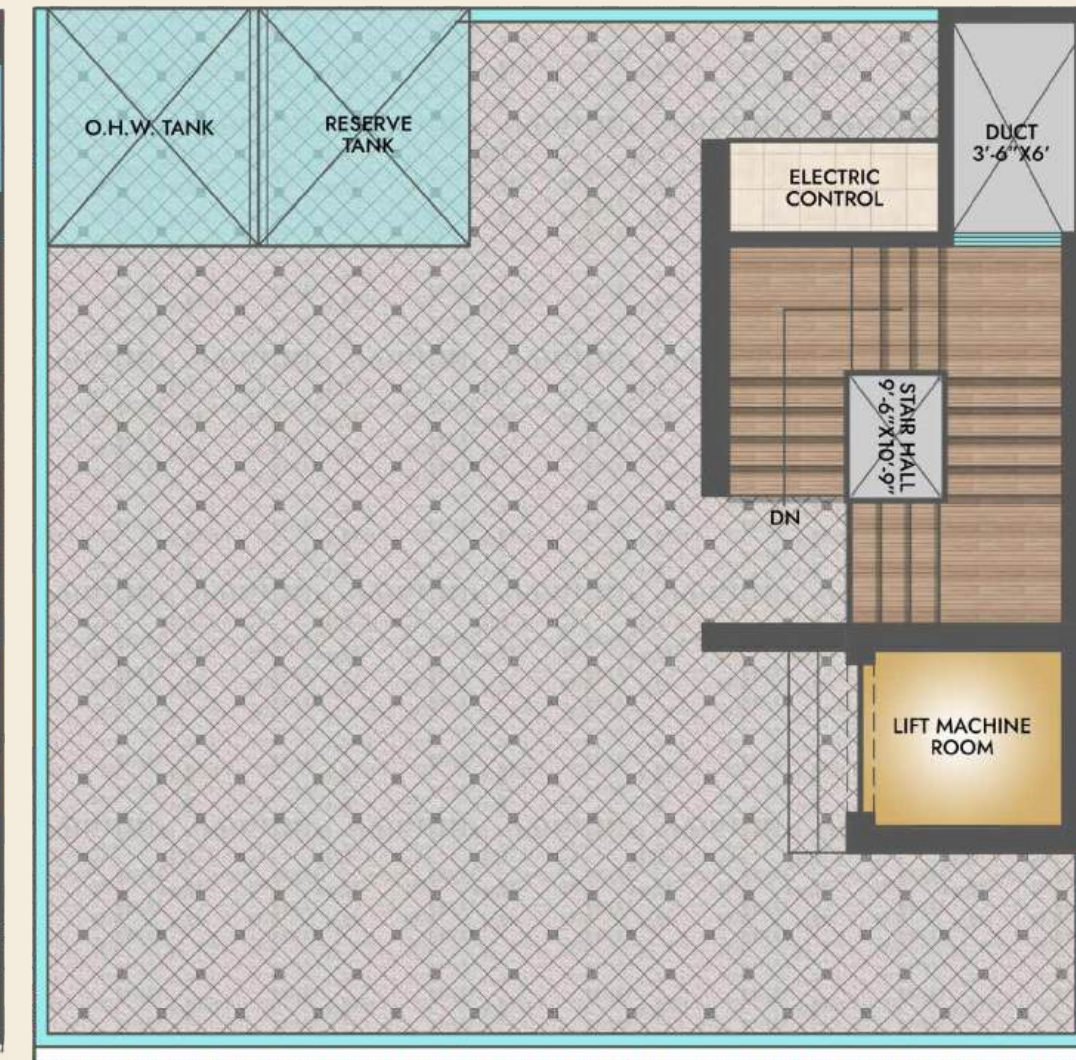


THIRD FLOOR

# 04 MARLA COMMERCIAL Tower



FOURTH FLOOR



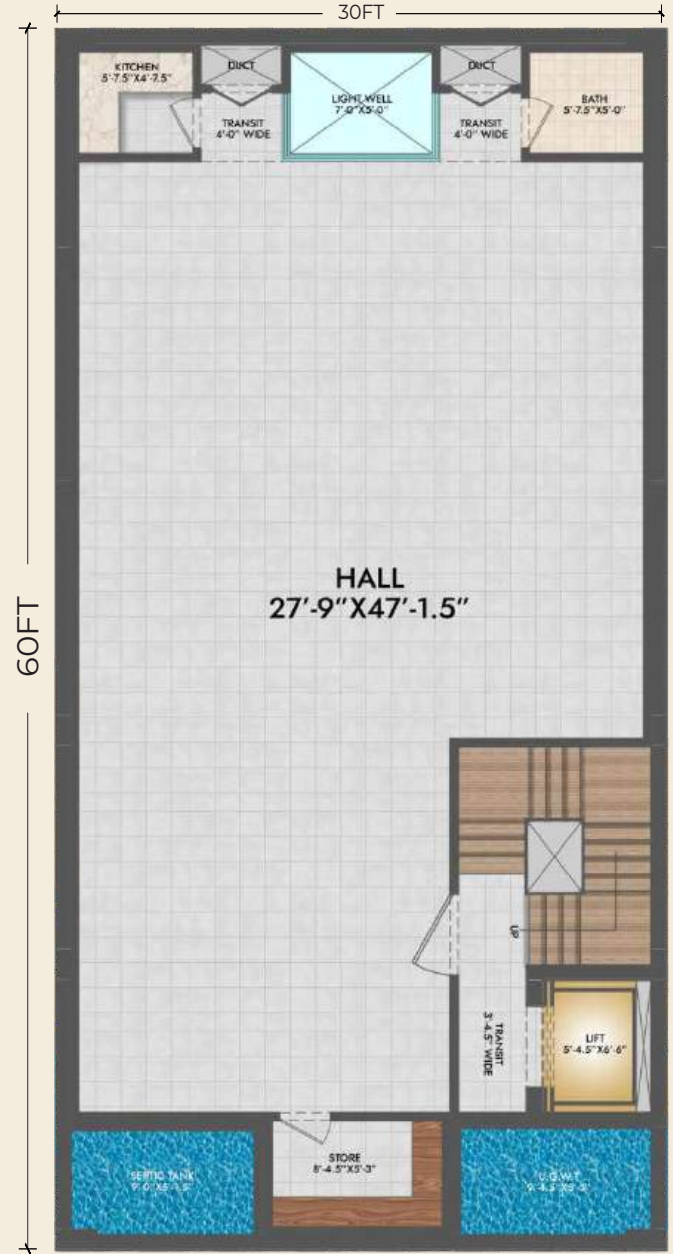
ROOF TOP

# 08 MARLA COMMERCIAL *Tower*

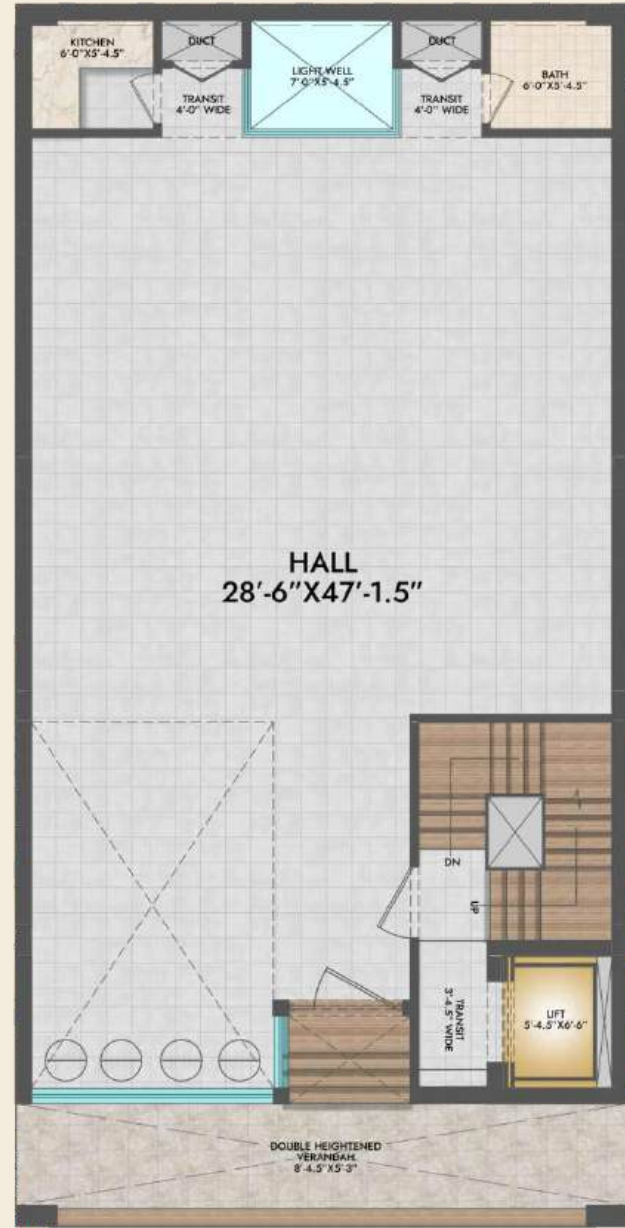
WHERE MAJOR BRANDS BELONG



# 08 MARLA COMMERCIAL Tower

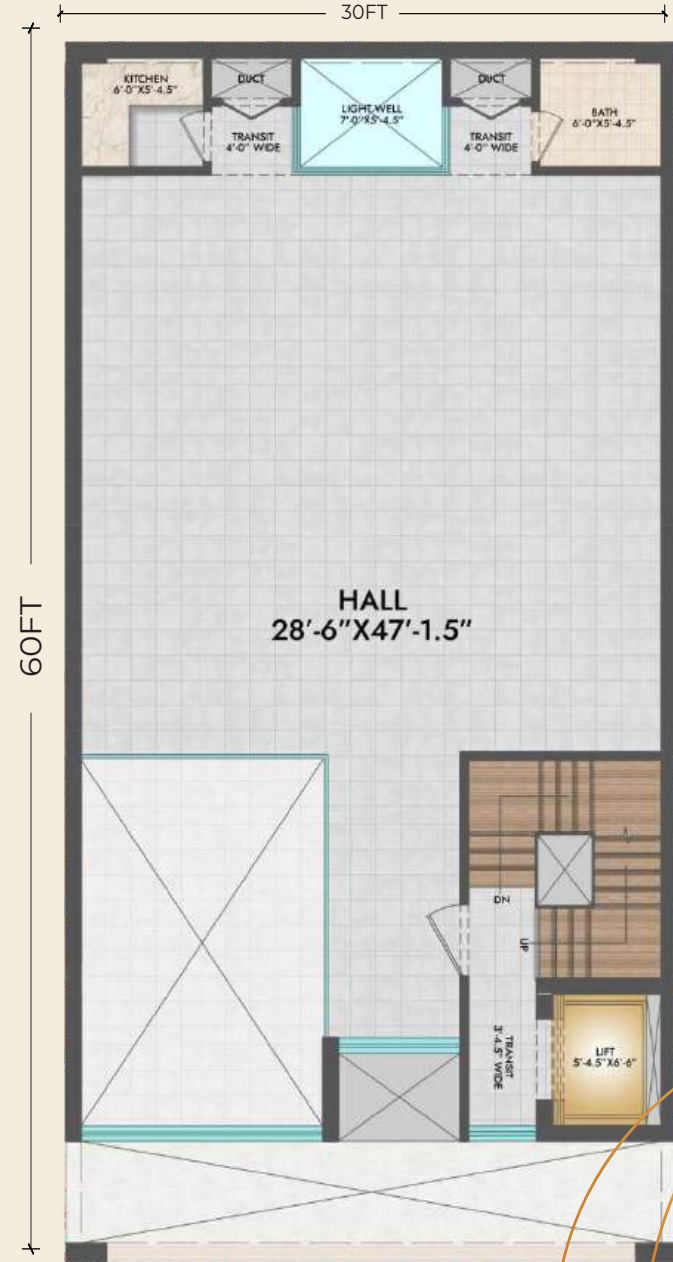


**BASEMENT FLOOR**

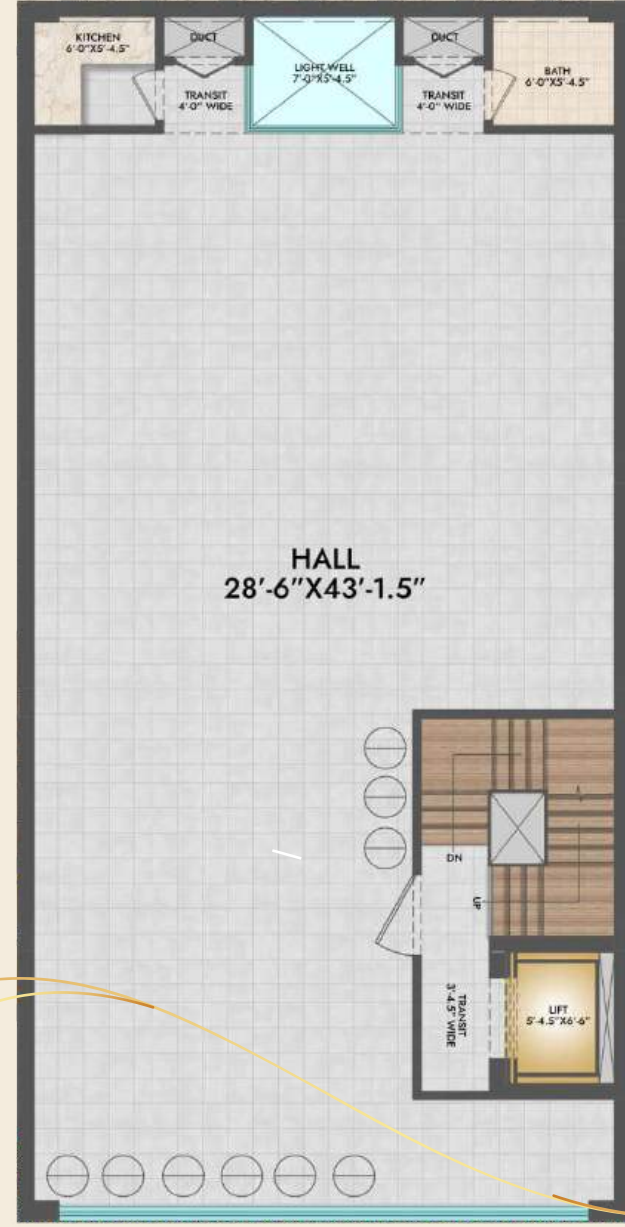


**GROUND FLOOR**

# 08 MARLA COMMERCIAL Tower



**MEZZANINE FLOOR**

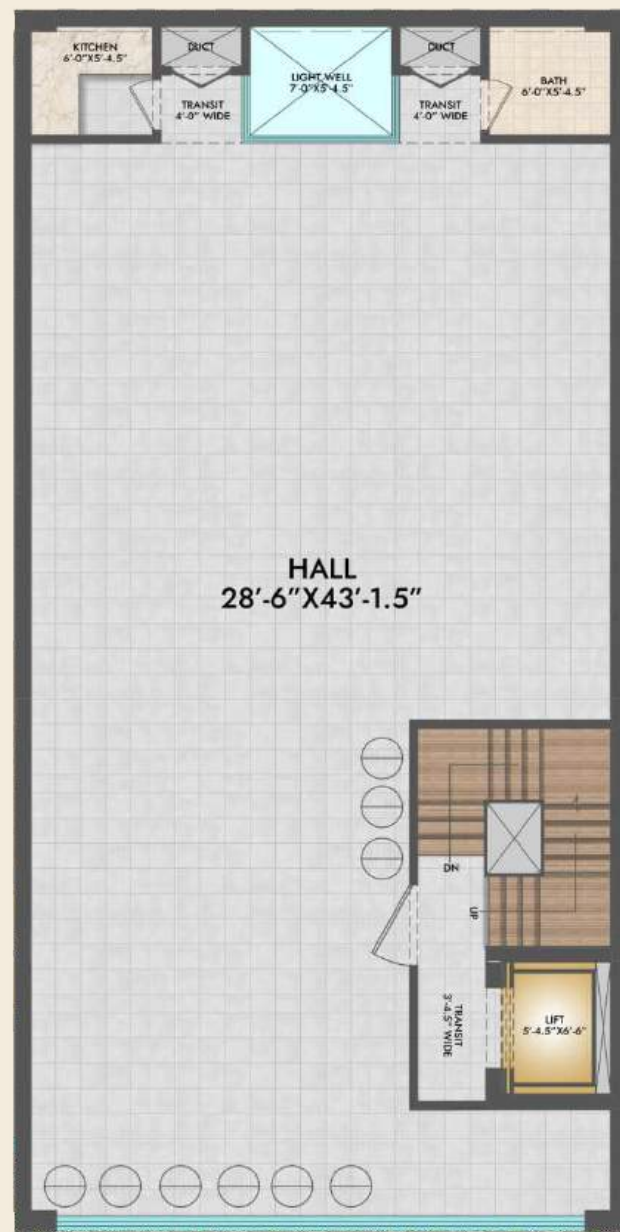


**FIRST FLOOR**

# 08 MARLA COMMERCIAL Tower

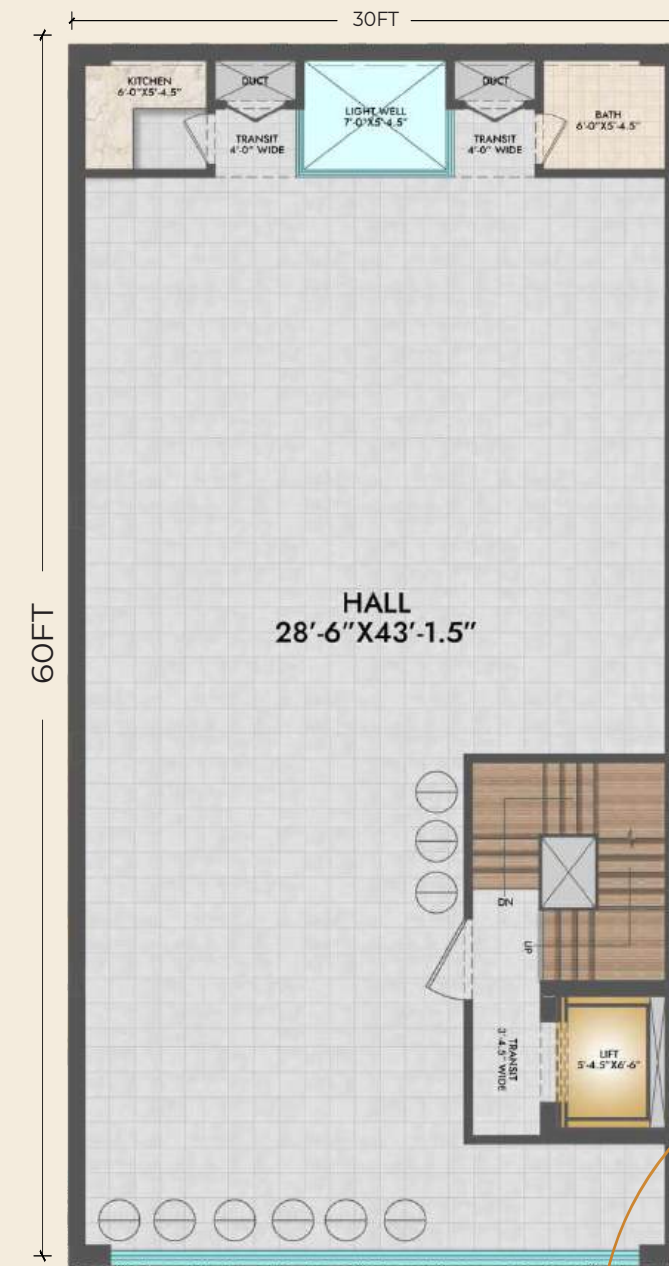


SECOND FLOOR



THIRD FLOOR

# 08 MARLA COMMERCIAL Tower



FOURTH FLOOR



ROOF TOP





# A COMPLETE LIVING

of historical places with modern amusement, alluring shopping amenities, playful outdoor activities and cannot be missed the charisma of sea-side enlivening your field of vision.



SPORTS CLUB



PARK



APARTMENT RESIDENTIAL



MASJID



24/7 SECURITY



GYMNASIUM



PARKING AREA



PRIME LOCATION

# THE PRESTIGE APARTMENTS

1 BHK  
500SFT | 2 BHK  
700SFT | 3 BHK  
900SFT

# APARTMENTS







## NATURE AT YOUR DOORSTEP

A park made for smiles and fresh air. Safe, open spaces for families and children. Walk, play, laugh, and connect with nature. Encouraging healthy living and happy moments. Where every visit feels refreshing.





# SPORTS COMPLEX

**BUILT FOR PASSION, POWER BY PERFORMANCE**

Where Passion Meets Performance.

Train Harder, Play Smarter, Become Unstoppable.





# FITNESS THAT FUELS

A place where energy comes alive. Sports, fitness, and fun for everyone. From beginners to professionals, all are welcome. Building healthy habits and strong communities, because an active life is a better life.





# SPIRITUAL HEART OF COMMUNITY



